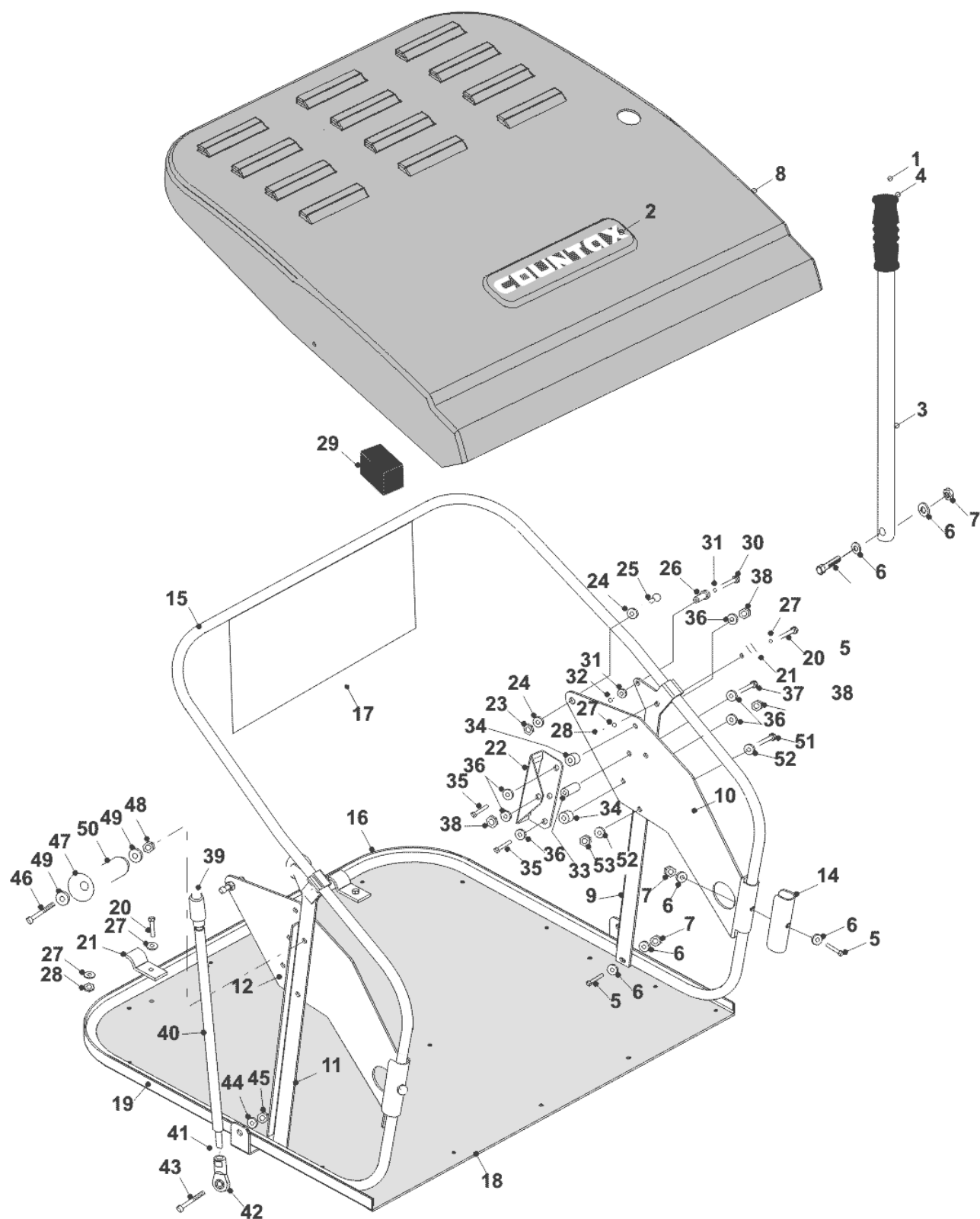


# C Series – Net Assembly 1999 to 2000



1	14880500	BAG TIPPING HANDLE PLUG
2	32932500	OBSOLETE
3	48402800	TIPPING HANDLE
4	38936500	FOAM GRIP
5	028007000	NEW PART NO: 019478900 M6X35MM BOLT
6	088003000	NEW PART NO: 08874300 WASHER
8	148006200	NET LID PLASTIC
10	301058100	NEW PART NO: 307187200 SWEEPER NET R/H SIDE PLATE
11	301057800	NEW PART NO: 307187300 SWEEPER NET R/H SIDE PLATE
12	301058000	NEW PART NO: 307187200 SWEEPER NET R/H SIDE PLATE
14	30149600	PGC BAG FRAME CLAMPING PLATE
15	174006800	MK2 SWEEPER UPPER BAG FRAME
16	174006900	MK2 SWEEPER LOWER BAG FRAME
17	389471900	NEW PART NO: 389471901 PGC COLLECTOR NET
18	301058300	SWEEPER GALVANISED FLOOR
19	307026400	OBSOLETE
21	301008400	BAG FLOOR CLAMP
22	307177300	TIPPING HANDLE CHANNEL SWEEPER
23	4886100	OBSOLETE
24	183025600	SWEEPER BALL SPACER
25	183010300	Q.R. BALL END SHAFT
26	18321000	RIDER DECK HANGING BRACKET PIVOT, FRONT
27	088000300	NEW PART NO: 08874300 WASHER
28	04920500	NUT M6 NYLOC
30	01901000	NEW PART NO: 02901000 M6X40M SCREW
33	31330800	SPACER - (HE C-SERIES SEAT SPRING)
34	183024001	NEW PART NO: 31330800 SPACER – (HE C-SERIES SEAT SPRING)
35	01935700	M8 X 35MM BOLT COMPRESSOR
36	088000200	NEW PART NO: 08819800 WASHER
37	018000300	BOLT - M6 X 20MM
38	04822300	FULL NUT HEAX - M8 Z/P
39	183024900	QUICK RELEASE BALL JOINT
40	183010400	NEW PART NO: 301122900 ADJUSTER LINK ROD
41	04872100	M10 LOCKNUT
42	10872600	10MM ROD END
43	028002300	M10 X 25 S/SCREW BZP
44	088002400	WASHER - 10.8ID X 20.7OD X 2MM THK
45	068000400	NEW PART NO: 04872100 M10 LOCKNUT
46	028662600	BOLT M8 X 55

47	307029900	C SERIES SWEEPER DOMED WASHER
48	04920100	M8 NYLOC NUT
50	183023900	BOSS BAG FRAME PIVOT